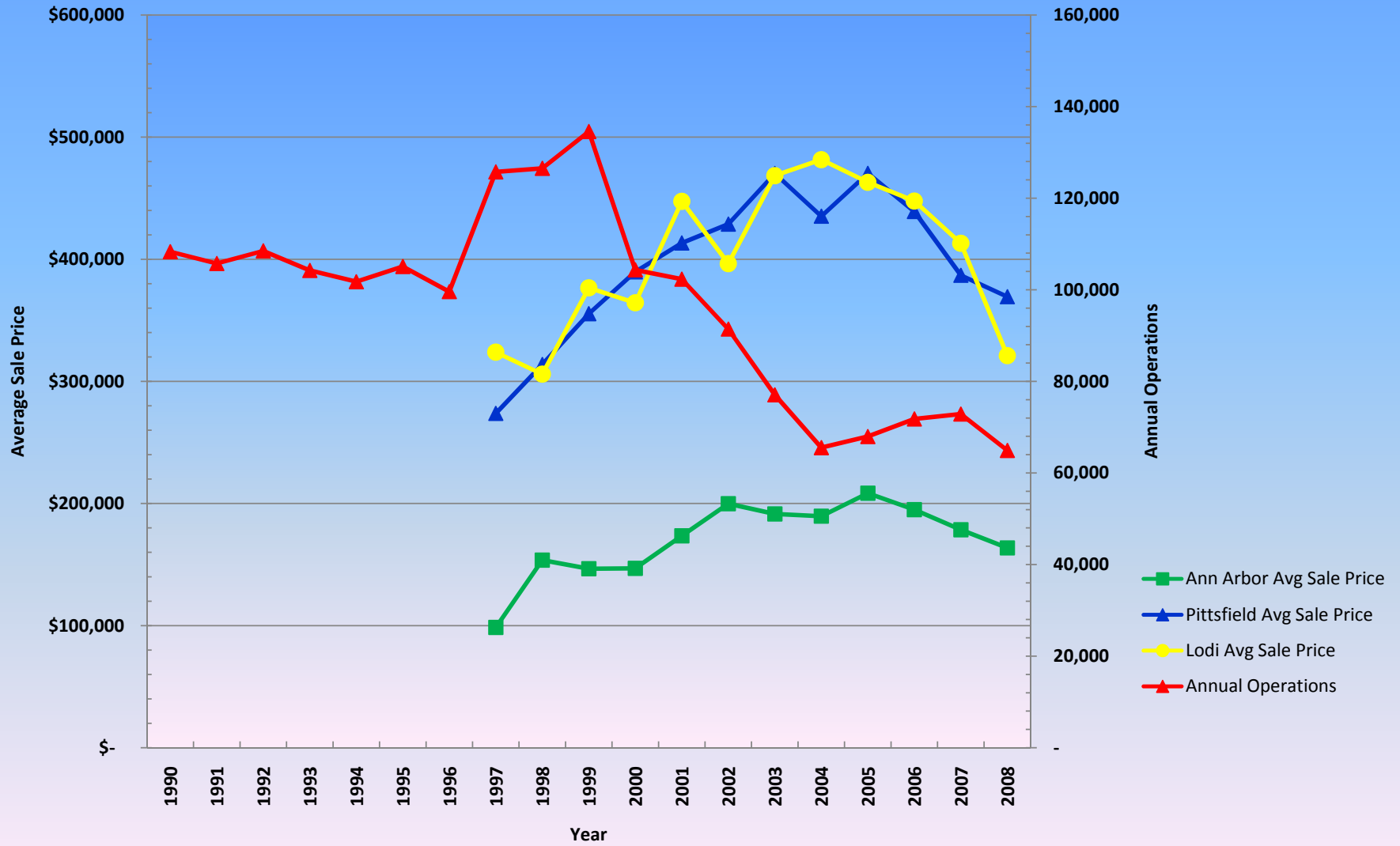


Average Sale Price vs Annual Operations Comparison Ann Arbor City, Lodi Twp & Pittsfield Twp



Average Sale Price vs Operation
1997 - 2008
Ann Arbor City, Lodi Twp, Pittsfield Twp

Year	Ann Arbor Avg Sale Price	Pittsfield Avg Sale Price	Lodi Avg Sale Price	Annual Operations
1990				108,305
1991				105,727
1992				108,489
1993				104,208
1994				101,752
1995				105,073
1996				99,590
1997	\$ 98,500	\$ 273,791	\$ 323,919	125,737
1998	\$ 153,631	\$ 313,761	\$ 305,972	126,513
1999	\$ 146,574	\$ 355,414	\$ 376,604	134,554
2000	\$ 146,918	\$ 389,689	\$ 364,378	104,342
2001	\$ 173,518	\$ 413,344	\$ 447,448	102,321
2002	\$ 199,785	\$ 428,772	\$ 396,443	91,414
2003	\$ 191,384	\$ 470,201	\$ 468,483	77,051
2004	\$ 189,601	\$ 435,253	\$ 481,560	65,516
2005	\$ 208,422	\$ 470,327	\$ 463,015	67,940
2006	\$ 194,971	\$ 439,115	\$ 447,682	71,785
2007	\$ 178,492	\$ 386,858	\$ 413,070	72,853
2008	\$ 163,614	\$ 369,354	\$ 321,079	64,910